



## ELYSEE

Ageing and Service Wine Cellar



Built-in

### GENERAL INFORMATION

**Number of bottles : 144**

**Number of zones : 2**

**Adjustable temperature range : 5-20°C**

**Noise level : 0dB**

**Energy class : E**

**Climate class : 3 (25°C - 60%)**

**Vinotag compatible : Yes**

### Product description

Designed to meet the requirements of restaurants, this innovative cellar has a fully modular interior, offering maximum flexibility for storage and sophisticated wine display. The wines are highlighted and presented horizontally, making it easier to read the labels to enhance the establishment's wine list. When exposed, the wine becomes a decorative element in its own right.

Its two independent temperature zones, secured by locks, allow different types of wine to be stored in optimal conditions. In addition to its technical performance, this wine cellar is a real decorative asset, installed as a central element or on a wall, designed to enhance the establishment and its wine list and encourage tasting, thus creating a unique experience for customers.



#### DOUBLE DOOR

Bring a smaller footprint in kitchens with door openings of 30 cm



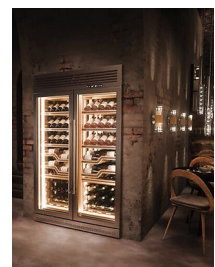
#### PRESENTATION SHELF

For a highlight of your most beautiful bottles in vertical position



#### LABEL VIEW SHELF

For a highlight of your wine selection with a better visibility of the labels



#### INSTALLATION

Both free standing and built-in you can install your cellar at the location of your choice

# ELYSEE

EAN-13 - 3541362406293

## Capacity and Temperature

- **Number of bottles: 144**
- **Adjustable temperature: 5-20°C**

## Door

**Door color :** Stainless steel  
**Door glass color :** Grey  
**Number of glass layers :** 2  
**Anti-UV :** Yes  
**Low-e glass :** Yes  
**Tempered glass :** Yes  
**Lock :** Yes  
**Reversible door :** No  
**Handle type :** Pulling bar  
**Self-closing door :** No

## Security

**Alarm :** Door, Temperature  
**Winter system :** Yes  
**Child lock :** Yes  
**Temperature memory :** Yes

## Logistic

**Net dimensions (WxDxH):** 120.0 x 55.5 x 202.5  
**Gross dimensions (WxDxH):** 131.5 x 69.0 x 224.5  
**Net weight (kg) :** 235.0  
**Gross weight (kg) :** 312.0

## Technical Data

**Energy class :** E  
**Annual energy (KWh/a) :** 1570  
**Climate class :** 3 (25°C - 60%)  
**Noise level :** 0dB / C  
**Energy Efficiency Index :** 62.3 %  
**Power input :** 380.00 W  
**Voltage :** 220 V  
**Length of power cable :** 250 cm  
**Plug Type :** E type  
**Type of gas :** R600a  
**Gas charge :** 66 g  
**Type of compressor :** Inverter  
**Main cooling system :** Air moving system  
**Evaporator number :** 2  
**Anti-vibration system :** Yes  
**Wheels :** yes

## Light

**Light source :** LED  
**Light color(s) :** Warm White  
**Dimmable light :** no  
**Light switch :** yes  
**Permanent light option :** Yes

**Qty per 20' :** 12  
**Qty per 40' :** 27  
**Qty per 40 HC :** 27  
**Customs code:** 8418501990

# ELYSEE

EAN-13 - 3541362406293



## Accessories

- 6 shelves, shelf
- 6 presentation shelves, wooden with stainless steel front, sliding, rails
- 4 label view shelves, wooden with stainless steel front, sliding, rails

## Built-in information

**Built-in dimensions (WxDxH) :** 121.50 x 56.50 x 202.50

**Plinth height :** 10.00

**Warning installation :** This product is equipped with a front ventilation system. Follow the installation instructions to ensure proper operation of the unit.